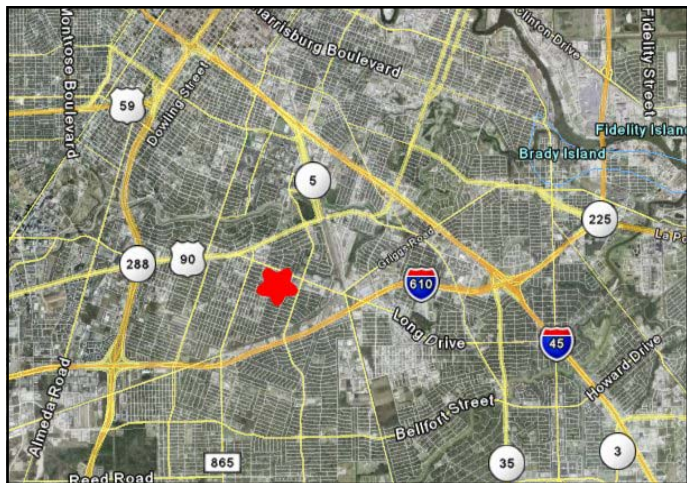




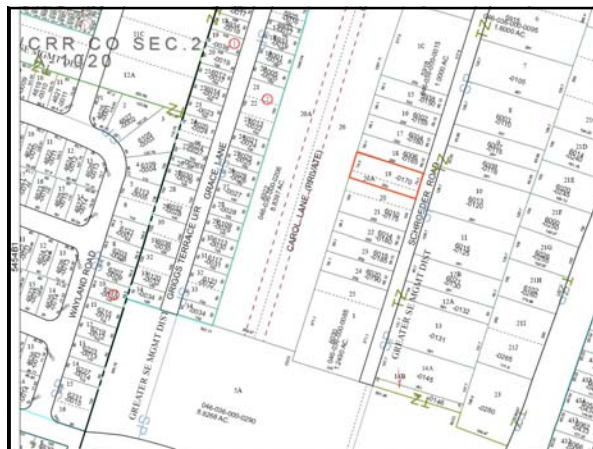
Al Lum Properties



Schroeder Vacant Commercial tract

Located on Schroeder south of Griggs Rd inside Loop 610. Easy access to Loop 610, Griggs, Hwy 90, 288 and I-45.

- 74.3' Frontage Schroeder X 200'
- 15,246 square feet
- City of Houston utilities
- Not in flood plain
- Tax rate \$2.53
- Km page 534J
- Asking \$3.25 per sq ft



**Contact Rebecca Lum
Or Marissa Masterson
281-821-2020**

Al Lum Properties, Inc.
P O Box 682825 Houston, Texas 77268-2825
281.821.2020 Fax:281.821.0100
www.allumproperties.com

The information above is believed to be true and reliable, but no warranty or representation, express or implied, is made as to its accuracy. This information is submitted subject to errors, omissions, change of price, rental or other conditions, withdrawal without notice, and to any listing conditions imposed by our principles.