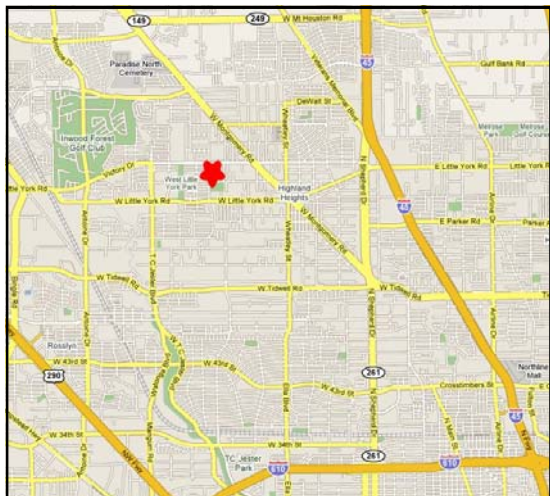


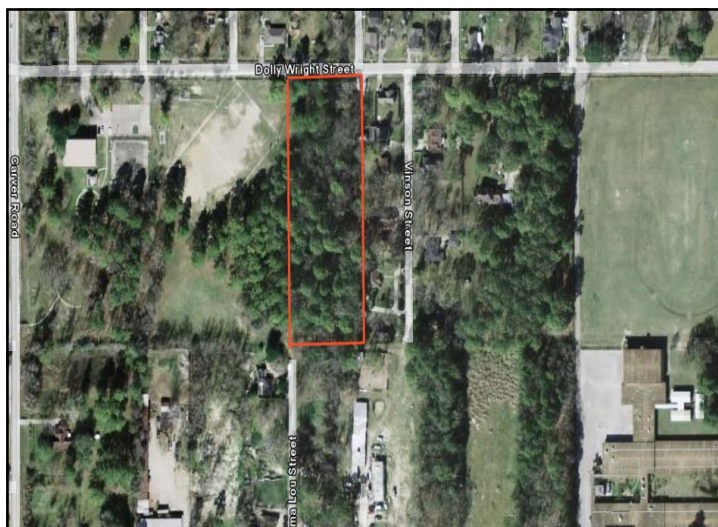


Al Lum Properties



Dolly Wright Rd 2.462 acres Highland Acre

Located on Dolly Wright just west of West Montgomery Rd between W. Little York and Victory Drive east of Carver. Easy access to West Montgomery Rd, Beltway 8, I-45 and TC Jester.



- 165' Frontage Dolly Wright X 645'
- 2.462 acres
- City of Houston utilities
- Not in flood plain
- 2007 Tax rate \$2.68
- Km page 412S
- Asking \$175,000



**Contact Rebecca Lum
Or Marissa Masterson
281-821-2020**

Al Lum Properties, Inc.
P O Box 682825 Houston, Texas 77268-2825
281.821.2020 Fax:281.821.0100
www.allumproperties.com

The information above is believed to be true and reliable, but no warranty or representation, express or implied, is made as to its accuracy. This information is submitted subject to errors, omissions, change of price, rental or other conditions, withdrawal without notice, and to any listing conditions imposed by our principles.