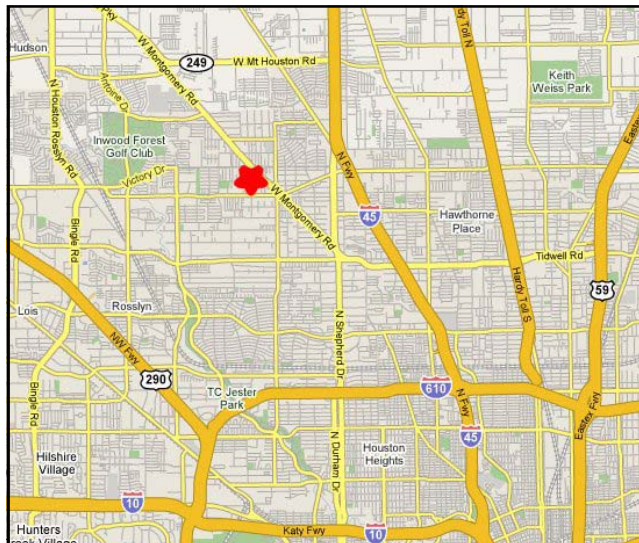




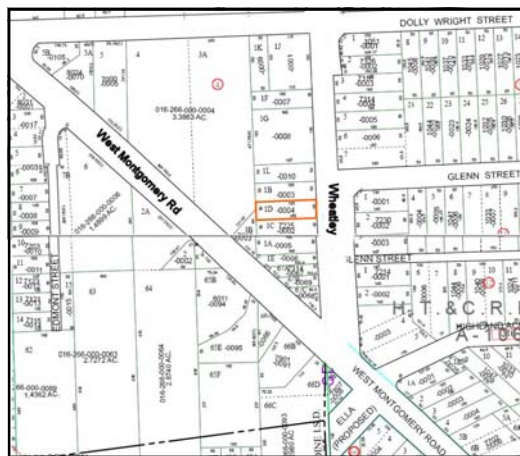
# Al Lum Properties



## Highland Acre Homes Wheatley Street

Located on Wheatley just north of W. Montgomery Rd north of West Little York. Easy access to Beltway 8 and I-45.

- 50' fronting Wheatley X 165' deep
- 8,250 sq ft
- City of Houston utilities
- Not in flood plain
- 2007 Tax rate \$2.68
- Km page 412X
- Asking \$17,100



**Contact Rebecca Lum  
Or Marissa Masterson  
281-821-2020**

Al Lum Properties, Inc.  
P O Box 682825 Houston, Texas 77268-2825  
281.821.2020 Fax:281.821.0100  
www.allumproperties.com

The information above is believed to be true and reliable, but no warranty or representation, express or implied, is made as to its accuracy. This information is submitted subject to errors, omissions, change of price, rental or other conditions, withdrawal without notice, and to any listing conditions imposed by our principles.