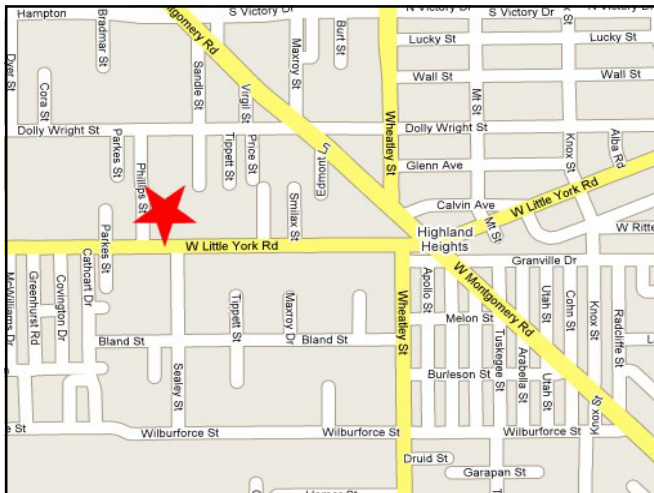




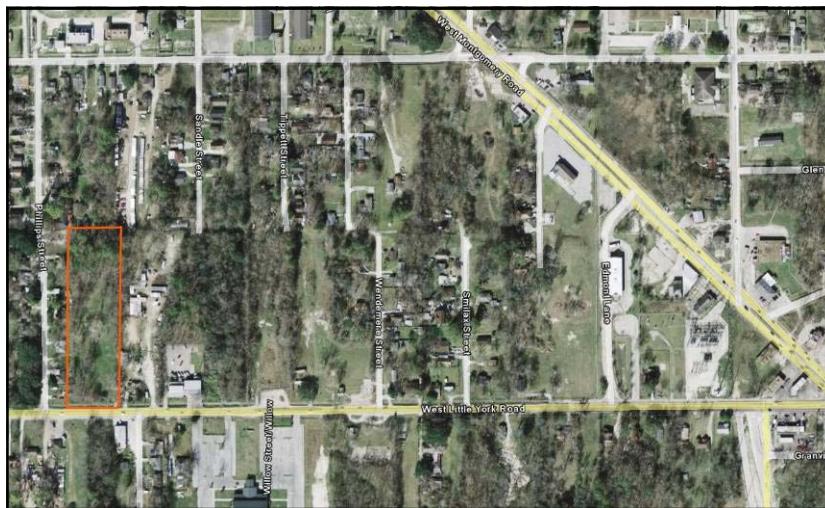
Al Lum Properties



1713 West Little York 2.3864 acres +/-

Vacant tract on West Little York just west of the intersection of W. Montgomery Road, West Little York and Wheatley and east of T.C. Jester. Easy access to I-45, N. Shepherd, T.C. Jester and IH-610.

- 165' W. Little York X 630' deep
- 2.384 acres per HCAD
- City of Houston utilities
- Not in flood plain
- Tax rate \$3.012
- Km page 412W
- Asking \$250,000



**Contact Rebecca Lum
or Marissa Masterson
281-821-2020**

Al Lum Properties, Inc.
P O Box 682825 Houston, Texas 77268-2825
281.821.2020 Fax:281.821.0100
www.allumproperties.com

The information above is believed to be true and reliable, but no warranty or representation, express or implied, is made as to its accuracy. This information is submitted subject to errors, omissions, change of price, rental or other conditions, withdrawal without notice, and to any listing conditions imposed by our principles.